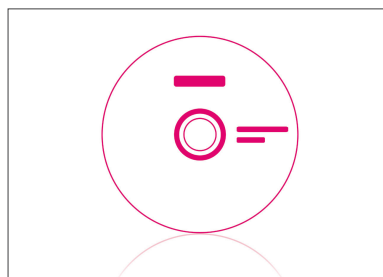
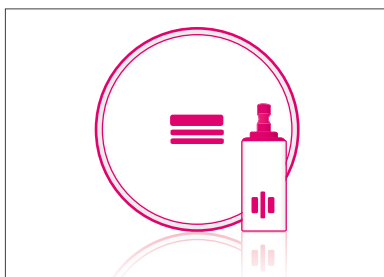
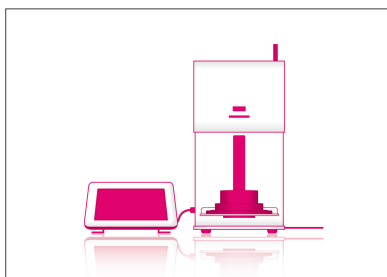
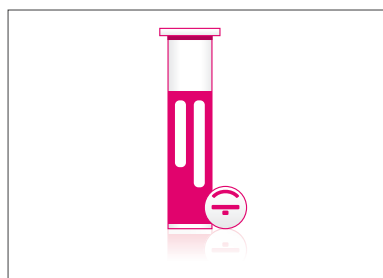
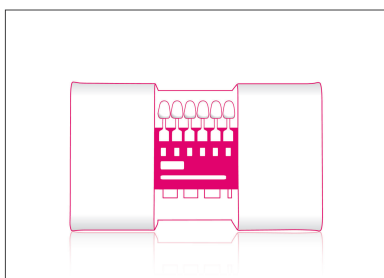


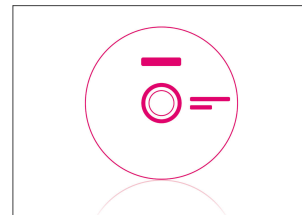
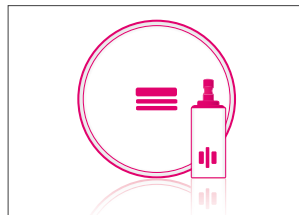
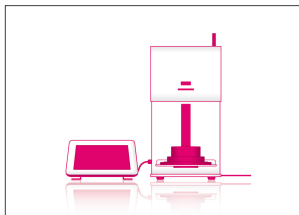
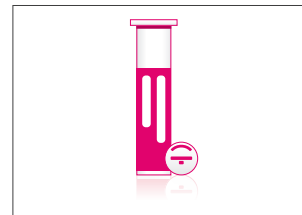
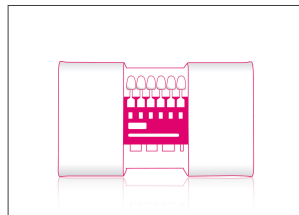
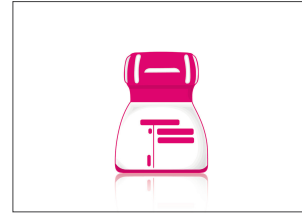
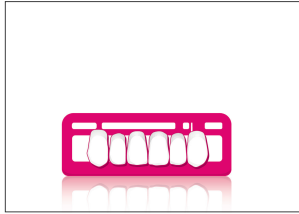
# VITA Compendium February 2021

## Removable prosthetics



VITA – perfect match.

**VITA**



---

VITA – perfect match.

**VITA**

## VITAPAN EXCELL® Anterior

For brilliant vitality of shape, shade and play of light.



### Product description

Lifelike, elaborate premium anterior teeth made of MRP composite.

### Features/Benefits

- simple fabrication of highly esthetic dentures due to lifelike tooth moulds with "golden" proportions
- brilliant play of shade and light thanks to excellent light dynamics and harmonious shade progression
- good shade reproduction with natural remaining dentition due to ideal shade accuracy to the shade guide
- excellent durability due to high load capacity and abrasion stability
- excellent gingiva design thanks to broadly dimensioned tooth neck

### Characteristics

#### Mould

- lifelike three-dimensional tooth geometry for brilliant results
- distinctive incisal characteristics for special vitality
- wide palatal bars for ideal interdental spacing / papilla creation

#### Special features

- pronounced enamel portion for good light transmission
- elaborate surface structure for natural diffusion and reflection of light
- integrated mamelon/opalescence for natural shade effect
- 3D layered structure for natural shade gradient

### Indications

Best prosthetic solution for:

- full and partial dentures
- implant-retained dentures

### prosthetics concepts

Suitable for all established concepts of lingual and balanced occlusion: e.g. according to Gysi, according to Prof. A. Gerber, according to APF/TIF, according to ABC

### Shades

- 11 x VITA SYSTEM 3D-MASTER® shades 0M3, 1M1, 1M2, 2L1.5, 2M1, 2M2, 2R1.5, 3L2.5, 3M2, 3R2.5, 4M2
- 15 x VITA classical A1–D4® shades A1–D4 (without B1)

### sets

- 17 x upper anterior tooth moulds (divided into four mould groups)
- 5 x lower anterior tooth moulds

## **VITAPAN EXCELL® Anterior kits**

VITAPAN EXCELL tooth storage

- X-small\*: 67 Sets / 402 Anteriors
- Small\*: 134 Sets / 804 Anteriors
- Medium\*: 268 Sets / 1608 Anteriors
- Large\*: 400 Sets / 2400 Anteriors

Available in VITA classical A1–D4® and VITA SYSTEM 3D-MASTER® shades.\*\*

\*) Note: The most frequently used moulds and shades come with the packaged tooth storage. We are also happy to put together storage systems according to your individual specifications.

\*\*) see available shades

VITAPAN EXCELL mould chart

Metal case with all moulds for selecting teeth:

- VITAPAN EXCELL Anterior

## VITAPAN PLUS® Anterior

For youthfully vibrant dentures with added translucency



### Product description

Lifelike, premium anterior teeth made of MRP composite with added translucency.

### Features/Benefits

- lively play of light  
thanks to extraordinary translucency from the high proportion of enamel
- easy reconstruction of youthful esthetics  
thanks to three-dimensional lifelike tooth moulds
- excellent durability  
thanks to high load capacity and abrasion stability
- efficient grinding and polishing  
due to optimum material homogeneity and edge stability

### Characteristics

#### Mould

- tooth geometry with youthful volume for lifelike prosthetics
- distinctively natural incisal characteristics for high vitality
- Wide palatal bars for ideal interdental spacing/papilla creation

#### Special features

- high proportion of enamel/translucent edges for the best light transmission
- nuance-rich surface texture for lifelike play of light
- integrated mamelon structure and whitish incisal region for natural shade effect
- 3D layered structure for natural shade gradient

### Indications

Best prosthetic solution for:

- full and partial dentures with youthful esthetics
- implant-retained dentures

### prosthetics concepts

For all established concepts of lingual and balanced occlusion: e.g. according to Gysi, according to Prof. A. Gerber, according to APF/TIF, according to ABC

### Shades

- 28 x VITA SYSTEM 3D-MASTER® shades 0M1, 0M3, 1M1–5M3
- 15 x VITA classical A1–D4® shades A1–D4 (without B1)

### sets

- 18 x upper anterior tooth moulds (divided into four mould groups)
- 6 x lower anterior tooth moulds

## **VITAPAN PLUS® Anterior kits**

VITAPAN PLUS tooth storage

- X-small\*: 67 Sets / 402 Anteriors
- Small\*: 134 Sets / 804 Anteriors
- Medium\*: 268 Sets / 1608 Anteriors
- Large\*: 400 Sets / 2400 Anteriors

Available in VITA classical A1–D4® and VITA SYSTEM 3D-MASTER® shades.\*\*

\*) Note: You will receive the most frequently used moulds and shades along with the packaged tooth storage. We are also happy to put together storage systems according to your individual specifications.

\*\*) see available shades

VITAPAN PLUS mould chart

Metal case with all moulds for selecting teeth:

- VITAPAN PLUS Anterior
- VITAPAN PLUS Anterior and VITAPAN LINGOFORM Posterior

## VITAPAN® LINGOFORM Posterior

For all concepts of occlusion due to multifunctional occlusal surface design



### Product description

Natural, multifunctional premium posterior teeth made of MRP composite.

### Features/Benefits

- Setup is easy and intuitive with "automatic" centric finding thanks to occlusal surfaces designed according to the cogwheel principle
- Can be used universally and reliably for all concepts of occlusion thanks to multifunctional occlusal surface design
- Time-saving setup without extensive grinding thanks to precisely defined centric
- Excellent durability thanks to high load capacity, abrasion stability and centric-supported function
- Good processability due to optimum material homogeneity and edge stability

### Characteristics

#### Mould

- three-dimensional tooth geometry with natural lingobuccal dimension
- multifunctional occlusal surface design with defined centric contacts

#### Special features

- finely nuanced surface texture for natural play of light
- maxillary cusp angle: approx. 15° to 20°

### Indications

Best prosthetic solution for:

- full and partial dentures
- implant-retained dentures

### prosthetics concepts

Suitable for all established concepts of lingual and balanced occlusion: e.g. according to Gysi, according to Prof. A. Gerber, according to APF/TIF, according to ABC

Especially suitable for: lingualized occlusal concepts

### Shades

- 27 x VITA SYSTEM 3D-MASTER® shades 0M3, 1M1–5M3
- 15 x VITA classical A1–D4® shades A1–D4 (without B1)

### sets

- 4 x upper posterior tooth moulds
- 4 x lower posterior tooth moulds

## **VITAPAN® LINGOFORM Posterior kits**

VITAPAN LINGOFORM tooth storage

- X-small\*: 50 Sets / 400 Posteriors
- Small\*: 100 Sets / 800 Posteriors
- Medium\*: 200 Sets / 1600 Posteriors
- Large\*: 300 Sets / 2400 Posteriors

Available in VITA classical A1–D4® and VITA SYSTEM 3D-MASTER® shades.\*\*

\*) Note: You will receive the most frequently used moulds and shades with the packaged tooth storage. We are also happy to put together storage systems according to your individual specifications.

\*\*) see available shades

VITAPAN LINGOFORM mould chart

Metal case with all moulds for tooth selection:

- VITAPAN LINGOFORM Posterior



## VITA PHYSIODENS® Anterior

For lifelike dentures with intricate mould design



### Product description

Lifelike, detailed premium anterior teeth made of MRP composite.

### Features/Benefits

- ideal integration in the remaining natural dentition through detailed, multi-layered moulds
- lively play of light through elaborate surface texture
- good shade integration with natural remaining dentition thanks to high shade accuracy to the shade guide
- reliable masking of secondary/tertiary structures thanks to high (basal) tooth volume
- excellent durability thanks to high load capacity and abrasion stability

### Characteristics

#### Mould

- natural three-dimensional tooth geometry for good integration in the remaining dentition
- lifelike, distinctive incisal characteristics and natural labial curvature
- broad tooth neck for ideal interdental space / papilla modeling
- high (basal) volume for masking of secondary/tertiary structures

#### Special features

- excellent chromaticity for good masking of tertiary structures
- elaborate surface texture for natural play of light
- 3D-layered structure for natural shade gradient

### Indications

Prosthetic solution for:

- partial dentures
- skeletal frameworks, attachment and bar constructions
- Telescopic dentures

### prosthetics concepts

Especially suited for: BLP (BIO-Logical Prosthetic) according to Dr. E. End

### Shades

- 28 x VITA SYSTEM 3D-MASTER® shades 0M1, 0M3, 1M1–5M3
- 15 x VITA classical A1–D4® shades A1–D4 (without B1)

### sets

- 21 x upper anterior tooth moulds (divided into four mould groups)
- 8 x lower anterior tooth moulds

## **VITA PHYSIODENS® Anterior kits**

VITA PHYSIODENS tooth storage

Anterior:

- X-small\*: 67 Sets / 402 Anteriors
- Small\*: 134 Sets / 804 Anteriors
- Medium\*: 268 Sets / 1608 Anteriors
- Large\*: 400 Sets / 2400 Anteriors

Available in VITA classical A1–D4® and VITA SYSTEM 3D-MASTER® shades.\*\*

\*) Note: You will receive the most frequently used moulds and shades with the packaged tooth storage. We are also happy to put together storage systems according to your individual specifications.

\*\*) see available shades

VITA PHYSIODENS mould chart

Metal case with all moulds for tooth selection:

- VITA PHYSIODENS Anterior and Posterior

## VITA PHYSIODENS® Posterior

For the best reproduction of function due to natural morphology



### Product description

Natural, detailed premium posterior teeth made of MRP composite.

### Features/Benefits

- simple restoration of natural chewing function thanks to occlusal surfaces with natural morphology
- intuitive centric finding and good occlusion thanks to centric-supported occlusal design
- good shade reproduction with natural remaining dentition thanks to excellent shade accuracy to the shade guide and broad shade selection
- reliable masking of tertiary structures thanks to high (basal) tooth volume
- excellent durability due to high load capacity and abrasion stability

### Characteristics

Mould

- three-dimensional tooth geometry based on natural tooth dimension
- occlusal surfaces/cusp relief according to the natural, fully anatomical template

Special features

- high (basal) volume
- Maxillary cusp angle: approx. > 30°
- detailed fissure design

### Indications

Prosthetic solution for:

- partial dentures
- model casting, attachment and bar constructions
- Telescope and cone constructions

### prosthetics concepts

Especially suited for: BLP (BIO-Logical Prosthetic) according to Dr. E. End

### Shades

- 27 x VITA SYSTEM 3D-MASTER® shades 0M3, 1M1–5M3
- 15 x VITA classical A1–D4® shades A1–D4 (without B1)

### sets

- 6 x upper posterior tooth moulds
- 6 x lower posterior tooth moulds

### **VITA PHYSIODENS® Posterior kits**

VITA PHYSIODENS tooth storage

Posterior:

- X-small\*: 50 Sets / 400 Posteriors
- Small\*: 100 Sets / 800 Posteriors
- Medium\*: 200 Sets / 1600 Posteriors
- Large\*: 300 Sets / 2400 Posteriors

Available in VITA classical A1–D4® and VITA SYSTEM 3D-MASTER® shades.\*\*

\*) Note: You will receive the most frequently used moulds and shades with the packaged tooth storage. We are also happy to put together storage systems according to your individual specifications.

\*\*) see available shades

VITA PHYSIODENS mould chart

Metal case with all moulds for tooth selection:

- VITA PHYSIODENS Anterior and Posterior

**VITA LUMIN® VACUUM Anterior****Product description**

The ceramic teeth are suitable for all indications in the field of high-premium partial and full dentures. They offer outstanding brilliance thanks to their integrated lumin effect, providing light refraction, opalescence and fluorescence, similar to their natural counterparts. Manufactured by hand in Germany, these custom-made products also feature mechanical anchoring elements in the denture base that ensure denture stability in the long term:

- Anterior teeth with a gold-clad pin within a hard ceramic core

**Material**

The anterior and posterior teeth are comprised of the proven VITA quartz feldspar ceramic, with the significant material and wear resistance ensuring prosthetic teeth that offer considerable durability. The properties of the material used also make these teeth an ideal choice for patients who are allergic to MMA.

**Sorting****Anteriores**

20 upper sets:

**180, 182, 185, 187, 190, 513, 565, 612, 622, 627, 632, 722, 732, 734, 737, 742, 743, 773, 843, 854**

6 lower sets:

**55, 539, 639, 730, 740, 760**

**Posteriores**

3 sets upper/lower SYNOFORM:

**10S, 11S, 13S**

3 sets upper/lower CUSPIFORM:

**40C, 41C, 44C**

**Shades**

10 x VITA classical A1–D4® shades (A1, A2, A3, A3.5, B2, B3, C1, C2, D2, D3)

Further colours are subject to delivery times.

**Combinations**

VITA LUMIN VACUUM anterior teeth are perfectly adapted to both VITA LUMIN VACUUM posterior tooth lines.

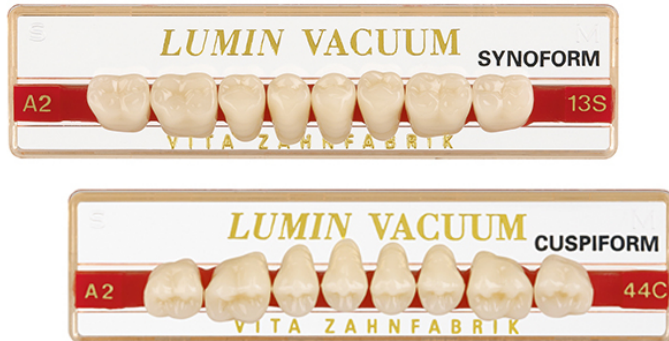
## VITA LUMIN® VACUUM Anterior kits

VITA LUMIN VACUUM Anteriores \*

Molds	Pcs per set	Description
20	6	Upper Anteriores
6	6	Lower Anteriores

\* in VITA classical shades A1, A2, A3, A3.5, B2, B3, C1, C2, D2, D3

## VITA LUMIN® VACUUM Posterior



### Product description

The ceramic teeth are suitable for all indications in the field of high-premium partial and full dentures. They offer outstanding brilliance thanks to their integrated lumin effect, providing light refraction, opalescence and fluorescence, similar to their natural counterparts. Manufactured by hand in Germany, these custom-made products also feature mechanical anchoring elements in the denture base that ensure denture stability in the long term:

- Posterior teeth, undercut cavities

### Material

The anterior and posterior teeth are comprised of the proven VITA quartz feldspar ceramic, with the significant material and wear resistance ensuring prosthetic teeth that offer considerable durability. The properties of the material used also make these teeth an ideal choice for patients who are allergic to MMA.

### Sorting

#### Anteriores

20 upper sets:

**180, 182, 185, 187, 190, 513, 565, 612, 622, 627, 632, 722, 732, 734, 737, 742, 743, 773, 843, 854**

6 lower sets:

**55, 539, 639, 730, 740, 760**

#### Posteriores

3 sets upper/lower SYNOFORM:

**10S, 11S, 13S**

3 sets upper/lower CUSPIFORM:

**40C, 41C, 44C**

### Shades

10 x VITA classical A1–D4® shades (A1, A2, A3, A3.5, B2, B3, C1, C2, D2, D3)

Further colours are subject to delivery times.

### Combinations

VITA LUMIN VACUUM anterior teeth are perfectly adapted to both VITA LUMIN VACUUM posterior tooth lines.

## VITA LUMIN® VACUUM Posterior kits

### VITA LUMIN VACUUM Posteriores

Molds	Pcs per set	Description
3	8	Upper Posteriores Synoform
3	8	Lower Posteriores Synoform
3	8	Upper Posteriores Cuspiform
3	8	Lower Posteriores Cuspiform



## VITAPAN® Anterior

For all cases thanks to a great variety of shades and moulds



### Product description

Age-appropriate, universal anterior teeth made of MRP composite.

### Features/Benefits

- simple fabrication of age-appropriate full/partial dentures thanks to wide range of, age-appropriate, distinctive tooth moulds
- good shade integration with remaining natural teeth thanks to excellent shade accuracy to the shade guide and wide shade selection
- natural shade effect thanks to integrated 3D shade gradient from the tooth neck to the incisal edge
- excellent durability thanks to high load capacity and abrasion stability
- efficient grinding and polishing due to optimum material homogeneity and edge stability

### Characteristics

#### Moulds

- age-appropriate, distinctive tooth geometry for full/partial dentures
- flat, naturally abraded incisal characteristics
- narrow tooth neck

#### Special features

- perfect balance between chroma and translucency
- harmonious surface structure with maturation characteristics
- 3D-layered structure for natural shade gradient

### Indications

Prosthetic solution for:

- Full/partial dentures
- Gerontoprotheses
- Dentures in cases of limited space

### prosthetics concepts

Suitable for all established concepts of lingual and balanced occlusion: e.g. according to Gysi, according to Prof. A. Gerber, according to APF/TIF, according to ABC

### Shades

- 28 x VITA SYSTEM 3D-MASTER® shades 0M1, 0M3, 1M1–5M3
- 15 x VITA classical A1–D4® shades A1–D4 (without B1)

### sets

- 31 x upper anterior tooth moulds (divided into four mould groups)
- 13 x lower anterior tooth mould

## **VITAPAN® Anterior kits**

VITAPAN tooth storage

- X-small\*: 67 Sets / 402 Anteriors
- Small\*: 134 Sets / 804 Anteriors
- Medium\*: 268 Sets / 1608 Anteriors
- Large\*: 400 Sets / 2400 Anteriors

Available in VITA classical A1–D4® and VITA SYSTEM 3D-MASTER® shades\*\*

\*) Note: You will receive the most frequently used moulds and shades with the packaged tooth storage. We are also happy to put together storage systems according to your individual specifications.

\*\*) see available shades

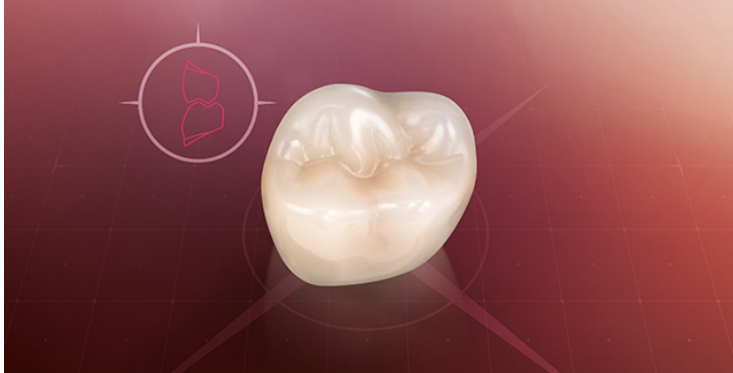
VITAPAN mould chart

Metal case with all moulds for tooth selection:

- VITAPAN Anterior

## VITAPAN® CUSPIFORM Posterior

For simple reproduction of chewing function for full/partial dentures



### Product description

Delicate posterior teeth with pronounced occlusal surface relief made of MRP composite.

### Features/Benefits

- simple reproduction of the chewing function in full/partial dentures
  - thanks to pronounced occlusal surface relief for well defined centric occlusion and intercuspitation
- excellent durability
  - thanks to high load capacity and abrasion stability
- efficient grinding and polishing
  - due to optimum material homogeneity and edge stability

### Characteristics

#### Moulds

- narrow, delicate tooth geometry for ideal tongue clearance and effective chewing
- pronounced occlusal surface/cusp relief for well defined centric occlusion and intercuspitation

#### Special features

- Maxillary cusp angle: approx. 15° to 20°
- 3D-layered structure for natural shade gradient

### Indications

Prosthetic solution for:

- Full/partial dentures
- Dentures in cases of limited space

### prosthetics concepts

Suitable for all established concepts of lingual and balanced occlusion: e.g. according to Gysi, according to Prof. A. Gerber, according to APF/TIF, according to ABC

Especially suitable for: buccal occlusal concepts

### Shades

- 27 x VITA SYSTEM 3D-MASTER® shades 0M3, 1M1–5M3
- 15 x VITA classical A1–D4® shades A1–D4 (without B1)

### sets

- 6 x upper posterior tooth moulds
- 6 x lower posterior tooth moulds

## **VITAPAN® CUSPIFORM Posterior kits**

VITAPAN CUSPIFORM tooth storage

- X-small\*: 50 Sets / 400 Posteriors
- Small\*: 100 Sets / 800 Posteriors
- Medium\*: 200 Sets / 1600 Posteriors
- Large\*: 300 Sets / 2400 Posteriors

Available in VITA classical A1–D4® and VITA SYSTEM 3D-MASTER® shades\*\*

\*) Note: You will receive the most frequently used moulds and shades with the packaged tooth storage. We are also happy to put together storage systems according to your individual specifications.

\*\*) see available shades

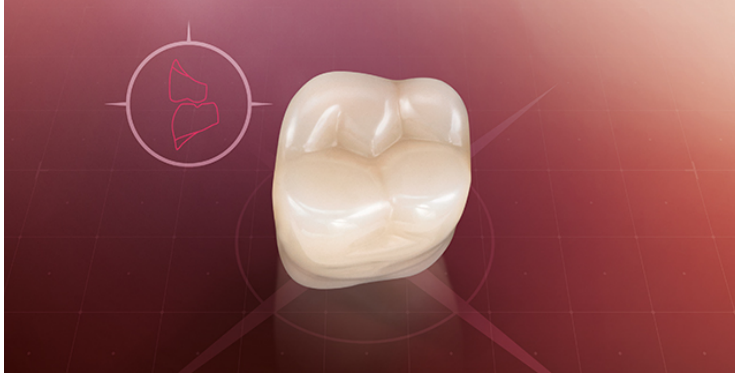
VITAPAN CUSPIFORM mould chart

Metal case with all moulds for tooth selection:

- VITAPAN CUSPIFORM Posterior

## VITAPAN SYNOFORM® Posterior

For reliable function in gerontoprosthetics due to a flat occlusal surface relief



### Product description

Slender posterior teeth with flat occlusal surface relief made of MRP composite.

### Features/Benefits

- simple reproduction of the chewing function in gerontoprosthetics thanks to flat occlusal surface relief for more freedom of movement
- excellent durability due to high load capacity and abrasion stability
- efficient grinding and polishing due to optimum material homogeneity and edge stability

### Characteristics

#### Moulds

- narrow, delicate tooth geometry for greater tongue clearance
- flat, reduced occlusal surface / cusp relief for more freedom of movement

#### Special features

- Maxillary cusp angle: approx. 6°
- 3D-layered structure for natural shade gradient

### Indications

Prosthetic solution for:

- gerontoprostheses

### prosthetics concepts

Suitable for all established concepts of lingual and balanced occlusion: e.g. according to Gysi, according to Prof. A. Gerber, according to APF/TIF, according to ABC

### Shades

- 15 x VITA classical A1–D4® shades A1–D4 (without B1)

### sets

- 5 x upper posterior tooth moulds
- 5 x lower posterior tooth moulds

### **VITAPAN SYNOFORM® Posterior kits**

VITAPAN SYNOFORM tooth storage

- X-small\*: 50 Sets / 400 Posteriors
- Small\*: 100 Sets / 800 Posteriors
- Medium\*: 200 Sets / 1600 Posteriors
- Large\*: 300 Sets / 2400 Posteriors

Available in VITA classical A1–D4® shades\*\*

\*) Note: You will receive the most frequently used moulds and shades with the packaged tooth storage. We are also happy to put together storage systems according to your individual specifications.

\*\*) see available shades

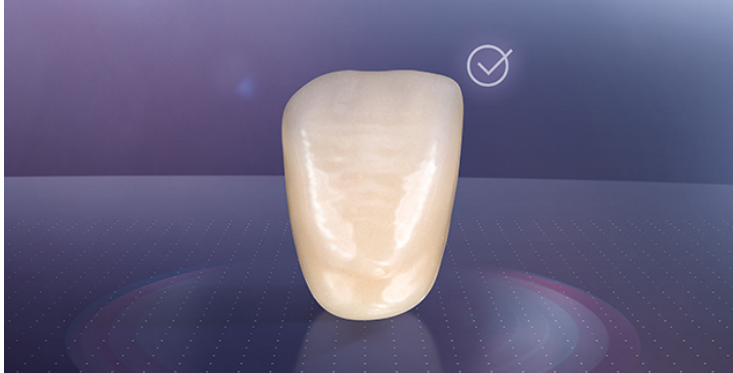
VITAPAN SYNOFORM mould chart

Metal case with all moulds for tooth selection:

- VITAPAN SYNOFORM Posterior

## VITA MFT® Anterior

For solid, standard dentures with the best cost efficiency



### Product description

Basic anterior teeth made of HC polymer material for solid standard dentures.

### Features/Benefits

- reliable production of solid, esthetic dentures thanks to natural incisal edge characteristics and angle features
- simple replication of a natural play of light thanks to a balanced enamel-dentine relationship, integrated mamelons and texture
- reliable shade reproduction thanks to good accuracy to the VITA shade standard (VITA classical A1–D4®)

### Characteristics

#### Mould

- universal tooth geometry with natural shape
- attractive, natural incisal design

#### Special features

- balanced enamel-dentine ratio for a natural play of light
- nuance-rich surface texture with integrated mamelons
- 3D-layered structure for natural shade gradient

### Indications

- solid standard provision for full/partial dentures

### prosthetics concepts

Suitable for all established concepts of lingual and balanced occlusion: e.g. according to Gysi, according to Prof. A. Gerber, according to APF/TIF, according to ABC

### Shades

- 13 x VITA SYSTEM 3D-MASTER® shades 0M1, 0M3, 1M1, 2L1.5, 2M1, 2M2, 3L1.5, 3L2.5, 3M2, 3R2.5, 4L1.5, 4M2, 5M1
- 4 x VITA classical A1–D4® shades A1, A3, C3, D3

### sets

- 12 x upper anterior tooth moulds (divided into four mould groups)
- 5 x lower anterior tooth moulds

### **VITA MFT® Anterior kits**

VITA MFT tooth storage

2S storage:

- 72 sets / 432 Anteriors\*
- 48 sets / 384 Posteriors\*

Available in VITA classical A1–D4® and VITA SYSTEM 3D-MASTER® shades\*\*

\* ) Note: You will receive the most frequently used moulds and shades with the packaged tooth storage. We are also happy to put together storage systems according to your individual specifications.

\*\* ) see available shades

VITA MFT mould chart

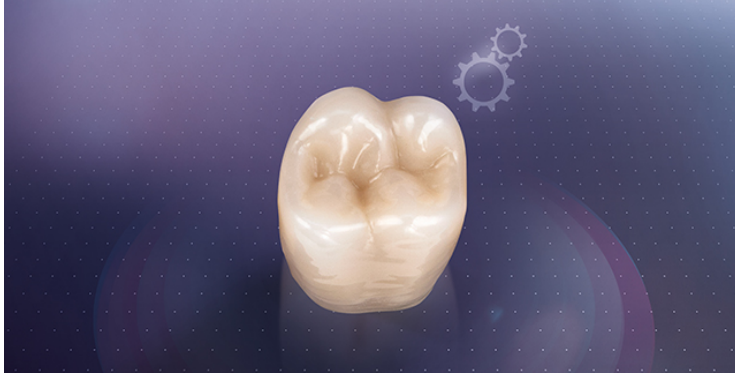
Metal case with all moulds for selecting teeth:

- VITA MFT Anterior



## VITA MFT® Posterior

For all concepts of occlusion thanks to multifunctional occlusal surface design



### Product description

Basic posterior teeth made of HC polymer with multifunctional occlusal surfaces.

### Features/Benefits

- simplified setup of dentures  
through predefined contact points for automatic occlusion
- high degree of setup reliability  
through function-optimized occlusal surfaces for a controlled centric occlusion
- reduced grinding work  
thanks to optimized basal design
- can be reliably used for all prosthetic concepts  
thanks to the multifunctional occlusal surface design

### Characteristics

#### Mould

- universal tooth geometry with natural lingobuccal extension
- multifunctional occlusal surface design with predefined contact points

#### Special features

- maxillary cusp angle: approx. 15° to 20°

### Indications

- solid standard provision for full/partial dentures

### prosthetics concepts

Suitable for all established concepts of lingual and balanced occlusion: e.g. according to Gysi, according to Prof. A. Gerber, according to APF/TIF, according to ABC

Especially suited for: lingualized and buccal occlusal concepts

### Shades

- 12 x VITA SYSTEM 3D-MASTER® shades 0M3, 1M1, 2L1.5, 2M1, 2M2, 3L1.5, 3L2.5, 3M2, 3R2.5, 4L1.5, 4M2, 5M1
- 4 x VITA classical A1–D4® shades A1, A3, C3, D3

### sets

- 3 x upper posterior tooth moulds
- 3 x lower posterior tooth moulds

### **VITA MFT® Posterior kits**

VITA MFT tooth storage

2S stock:

- 72 sets / 432 Anteriors\*
- 48 sets / 384 Posteriors\*

Available in VITA classical A1–D4® and VITA SYSTEM 3D-MASTER® shades\*\*

\* ) Note: You will receive the most frequently used moulds and shades with the packaged tooth storage. We are also happy to put together storage systems according to your individual specifications.

\*\* ) see available shades

VITA MFT mould chart

Metal case with all moulds for selecting teeth:

- VITA MFT Posterior

## VITA VIONIC® WAX



### Product description

Wax disc for the fabrication of wax setups.

### Features/Benefits

- comfortable wax try-in  
thanks to fabrication of complete CAD/CAM denture out of white wax
- precise wax setup  
thanks to precisely milled molds based on the digital construction
- easy opportunity for correction  
since the wax setup can be modified during the try-in

### Characterization

VITA VIONIC WAX

- are shape-stable, temperature-resistant synthetic-wax blanks

### Indications

Best prosthetic solution for:

- digital dentures

### Shades

- Pink
- White

**VITA VIONIC® WAX products****VITA VIONIC® WAX**

VITA VIONIC WAX, 1 pc.

Description	Prod. no. 1 pc.
Pink, Ø 98.4 x h 30 mm	ADP9830
White, Ø 98.4 x h 30 mm	ADW9830

## VITA VIONIC® BASE



### Product description

PMMA disc for the fabrication of final denture bases.

### Features/Benefits

- efficient base fabrication  
thanks to CAD/CAM processing without manual flasking  
and molding
- easily reproduced  
since the system enables the reproduction of the base with  
a mouse click
- excellent fit to the alveolar ridge  
due to CAD/CAM technical fabrication of the base without  
a polymerization step

### Characterization

VITA VIONIC BASE

- are highly crosslinked, industrially polymerized PMMA  
blanks
- are homogeneous material blanks with the best shape and  
shade stability

### Indications

Best prosthetic solution for:

- digital dentures

### Shades

- Orange-Pink
- Deep-Pink
- Light-Pink

**VITA VIONIC® BASE products****VITA VIONIC® BASE**

VITA VIONIC BASE, 1 pc.

Description	Prod. no. 1 pc.
Deep-Pink, Ø 98.4 x h 26 mm	ADDP9826
Deep-Pink, Ø 98.4 x h 30 mm	ADDP9830
Light-Pink, Ø 98.4 x h 26 mm	ADLP9826
Light-Pink, Ø 98.4 x h 30 mm	ADLP9830
Orange-Pink, Ø 98.4 x h 26 mm	ADOP9826
Orange-Pink, Ø 98.4 x h 30 mm	ADOP9830

## VITA VIONIC® BOND



### Product description

Bonding solution for fixing denture teeth in VITA VIONIC Basis.

### Features/Benefits

- efficient adhesive bonding of the denture teeth without complex hot / cold polymerization processes
- precise, seamless fixation of the teeth in the cavity using a low-viscosity, self-curing bonding system
- secure bond of denture teeth to the base thanks to bonding solution tailored to the material

### Characterization

VITA VIONIC BOND

- is a MMA-based self-curing two-component bonding system
- has a low-viscosity consistency for precise application to the adhesive surface
- forms a reactive boundary layer on the adhesive surfaces for a secure bond

### Indications

Best solution for:

- digital VITA VIONIC dentures

### Content

Contents of the VITA VIONIC BOND Kit

- VITA VIONIC BOND I, jar, 2 ml
- VITA VIONIC BOND II, vial, 1 ml
- Microbrush, 3 pcs.

## VITA VIONIC® BOND kits

### VITA VIONIC® BOND

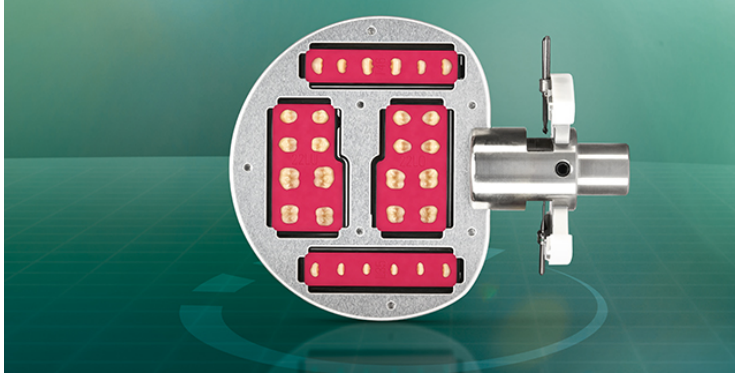
#### VITA VIONIC BOND KIT AD9VBK

Quantity	Content	Material
1	2 ml	VITA VIONIC BOND I
1	1 ml	VITA VIONIC BOND II
3	1 pc.	Microbrush



## VITA VIONIC® FRAME

For the efficient CAD/CAM fabrication of dentures with Ceramill® Motion 2



### Product description

VITAPAN EXCELL DD FRAME

VITAPAN LINGOFORM DD FRAME

### Features/Benefits

- simple, digital reconstruction of function  
individual design with appropriate concept of occlusion and skeletal class selectable
- efficient full denture fabrication  
through basal tooth modification by push-button based on the CAD denture design
- process-secure, fully digital CAD/CAM fabrication  
thanks to a coordinated material system incl. bonding solution

### Characteristics

DD FRAME for Ceramill D-set holder system

- used for CAM processing of denture teeth within a tooth frame
- enables milling of the basal and circular parts of the teeth

### Indications

Best prosthetic solution for:

- manufacture of partial and full dentures

### prosthetics concepts

CAD model analysis:

- Analysis based on TiF with Ceramil D-flow software module

CAD denture setup:

VITA-specific coordinated design options enable

- the implementing of the setup concepts: buccal, lingual, crossbite and according to Prof. Dr. A. Gerber
- the incorporation of occlusal positions (normal/cross-bite)
- the incorporation of all Angle bite classes

### Shades

- 6 x VITA classical A1–D4® shades A1, A2, A3, A3.5, B3, D3

### sets

#### VITAPAN EXCELL DD FRAME

- 9 x upper anterior tooth moulds\*
- 4 x lower anterior tooth moulds\*

#### VITAPAN LINGOFORM DD FRAME

- 4 x upper posterior tooth moulds\*
- 4 x lower posterior tooth moulds\*

\*) Each upper/lower set has a special frame with embedded denture teeth.

## VITA VIONIC VIGO®

The new tooth generation for digital denture fabrication at the touch of a button



### Product description

VITA VIONIC VIGO is a completely new generation of teeth made of SE polymer with a design perfected for the digital fabrication of dentures.

### Features/Benefits

- Increase productivity  
Economical fabrication without any manual/CAM reworking, thanks to a tooth design perfected for a digital workflow
- Completion in a time-saving manner  
Time-saving finalization of the denture via adhesive bonding of the cervically sandblasted teeth in the base, without further auxiliary steps
- Natural appearance at the push of a button  
Efficient reproduction of nature by means of prefabricated teeth with a vivid play of shape and color, as well as directly accessible digital denture setups
- Process-reliable fabrication  
Reliable, digital fabrication using a coordinated material system, including a unique bonding solution for precise fixation of teeth

**Not available in all markets. Official approval pending in some markets.**

### Characteristics

Mould

- Allows a detailed reproduction of tooth shape and papilla through a lively physical shape with pronounced palatal ridges

Special features

- Offers good light dynamics with excellent translucency, opalescence and fluorescence, thanks to natural 3D layer structure and color pigmentation
- Shows a particularly natural play of light, thanks to its multi-faceted surface texture

### Indications

For highly efficient digital fabrication of full dentures with all common open CAM and 3D printing systems

### prosthetics concepts

- Unlimited, patient-specific design options, thanks to VITA libraries with the largest variety of setup concepts, including bite class/position (buccal, lingual, Cross bite, Prof. Dr. A. Gerber)

### Shades

VITA classical A1–D4®/bleach shades: 0M1, A1, A2, A3, A3.5, B3, D3

### sets

- 8 x upper anterior tooth moulds
- 4 x lower anterior tooth moulds
- 4 x upper & lower posterior tooth moulds

## VITACOLL® bonding agent

### Bonding agent for denture teeth



#### Product description

VITACOLL ensures reliable bonding of denture teeth to denture base materials. Since a wide range of different denture base materials is used, it is frequently difficult for the responsible dental technician to determine whether these materials provide perfect bonding to the denture teeth available. By using VITACOLL, the required certainty is ensured.

Bottle cont. 100 ml

#### Features/Benefits

The use of VITACOLL Bonding Agent results in reliable chemical bonding of denture teeth to hot and cold curing polymerizates as well as polymethacrylate injection molding materials and prevents teeth from breaking out of the denture base.

## VITACOLL® bonding agent products

### VITACOLL® bonding agent

Description	Prod. no.
VITACOLL, 100 ml	A9C100

## VITAFOL<sup>®</sup> H silicone separating film

Protects denture and ceramic teeth during denture fabrication



### Product description

VITAFOL H is a silicon material which protects denture and ceramic teeth during denture fabrication.

### Features/Benefits

- VITAFOL H protects denture and ceramic teeth. Extremely accurate modellations of the gingiva margin can be retained during devesting and areas that are covered with VITAFOL H remain clean and do not need to be finished.
- Areas that are covered with VITAFOL H do not need to be separated towards the plaster material. Accordingly no separating agent can reach the basal surfaces of the teeth. In the case of denture teeth, a separating layer between teeth and base material can be avoided.
- Damage during pressing and devesting is avoided through the buffer effect of VITAFOL H.

## VITAFOL® H silicone separating film kits

### VITAFOL® H silicone separating film



#### VITAFOL H extended kit A9FG\*

Quantity	Content	Material
3	70 ml	VITAFOL H paste
3	15 ml	VITAFOL H hardening liquid
3	80 g	VITAFOL H adhesive crystals
1	pc	Mixing pad
1	pc	Brush
		Instructions for use

\* enough for 300 dentures with 14 teeth



#### VITAFOL H laboratory kit A9FL\*

Quantity	Content	Material
1	70 ml	VITAFOL H paste
1	15 ml	VITAFOL H hardening liquid
1	80 g	VITAFOL H adhesive crystals
1	pc	Mixing pad
1	pc	Brush
		Instructions for use

\* enough for 100 dentures with 14 teeth

## VITAFOL® H silicone separating film products

### VITAFOL® H silicone separating film

Description	Prod. no.
VITAFOL H hardening liquid, 15 ml	A9F15
VITAFOL H adhesive crystals, 80 g	A9F50
VITAFOL H paste, 70 ml	A9F90
VITAFOL H mixing pad printed, 50 pages	A9FA
VITAFOL H brush no. 11	A9FP

## Tooth cabinet vario

### Plastic cabinet storage system



#### Product description

The VITA tooth cabinet which features comprehensive storage options and requires only little space is perfectly suitable to store all VITA tooth stocks.

By integrating additional drawers, the new cabinet system can be expanded; it consists of a high-quality, resistant and neutral light-grey plastic material.

The cabinet features smoothly running drawers and rail guides on both sides for complete pull-out.

The VITA tooth cabinet vario is a component of the VITA modular box system and thus compatible with all modular boxes.

#### Sorting

Maximum storage per drawer:

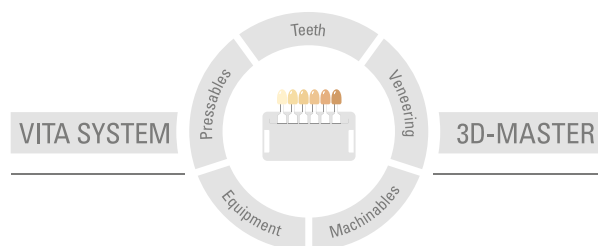
72 x 6 = 432 Anteriors in sets of 6 teeth

48 x 8 = 384 Posteriors in sets of 8 teeth



**Tooth cabinet vario products****Tooth cabinet vario**

Description	Prod. no.
Tooth cabinet S10 with 10 drawers: External dimensions: 482 x 345 x 350 mm	ZMBS10
Tooth cabinet S12 with 12 drawers: External dimensions: 482 x 345 x 420 mm	ZMBS12
Tooth cabinet S2 with 2 drawers: External dimensions: 482 x 345 x 70 mm	ZMBS2
Tooth cabinet S4 with 4 drawers: External dimensions: 482 x 345 x 140 mm	ZMBS4
Tooth cabinet S6 with 6 drawers: External dimensions: 482 x 345 x 210 mm	ZMBS6
Tooth cabinet S8 with 8 drawers: External dimensions: 482 x 345 x 280 mm	ZMBS8



This information issued: 02-2021

Our products were developed specifically for dental use and must be processed according to the instructions for use. The information/illustrations contained herein do not constitute an assurance of properties and are not binding.

# VITA

VITA Zahnfabrik H. Rauter GmbH & Co.KG  
Postfach 1338 · D-79704 Bad Säckingen · Germany  
Tel. +49 (0) 7761/562-0 · Fax +49 (0) 7761/562-299  
Hotline: Tel. +49 (0) 7761/562-222 · Fax +49 (0) 7761/562-446  
[www.vita-zahnfabrik.com](http://www.vita-zahnfabrik.com) · [info@vita-zahnfabrik.com](mailto:info@vita-zahnfabrik.com)  
 [facebook.com/vita.zahnfabrik](https://facebook.com/vita.zahnfabrik)